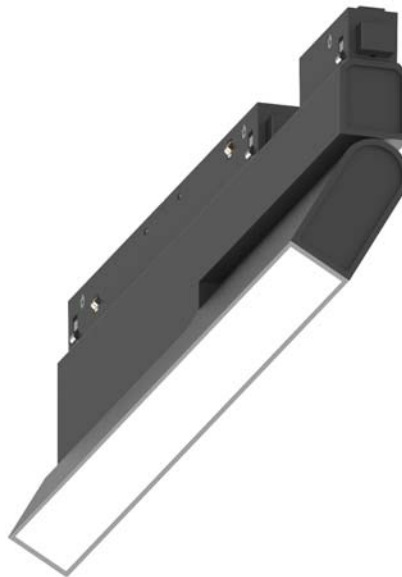


Low Voltage Track System Module ML26-SG280-7W-927



Light Output Ratio:	100.0%	
Luminaire Power:	6.84 W	
SHR Nominal:	1.25	Calculated using the TM5
SHR Maximum:	1.35	fine grid method.

C Range: 0 - 360DEG
C Interval: 15.0DEG
Test Speed: HIGH
Temperature: 25.3DEG
Operators: Jason
Test Date: 2020-05-06

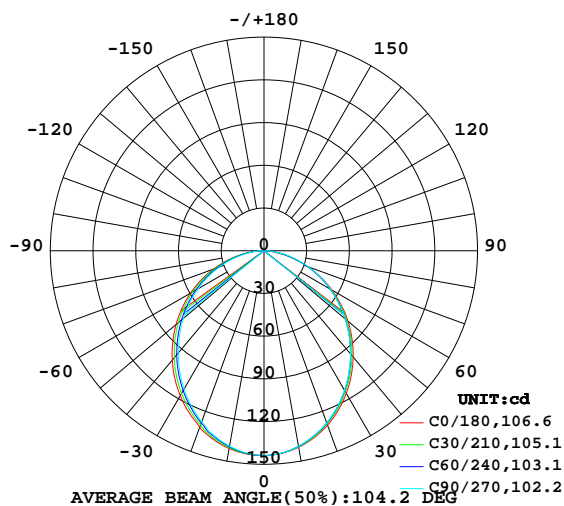
γ Range: 0 - 90DEG
γ Interval: 0.5DEG
Test System: EVERFINE GO-2000B_V1 SYSTEM V2.0.362
Humidity: 58%
Test Distance: 5.850m [K=1.0000]
Remarks:

LUMINAIRE PHOTOMETRIC TEST REPORT

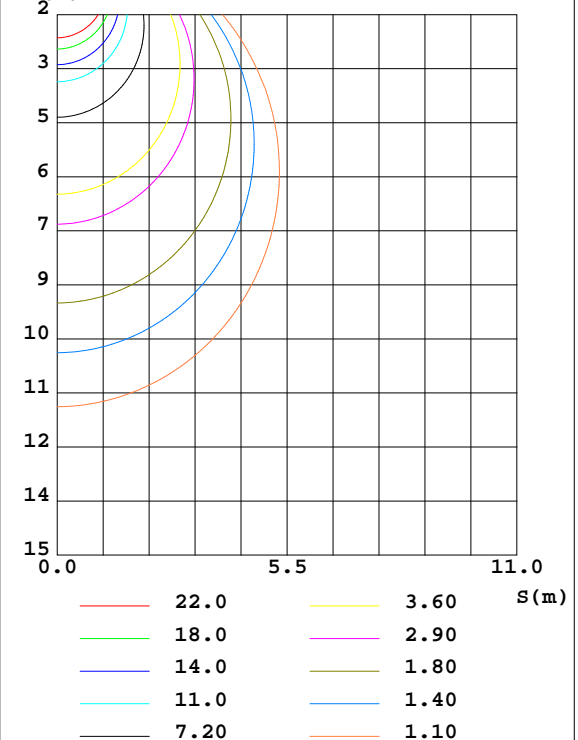
Test:U:48.00V I:0.1425A P:6.840W PF:1.000 Freq:0Hz Lamp Flux:376.398x1 lm		
NAME: ML26-SG280-7W-927	TYPE:Low Voltage Track System Module	
SPEC.:2700K	DIM.: L284mm*W22mm*H43mm	
MFR.: NEKO LIGHTING AG		

DATA OF LAMP		PHOTOMETRIC DATA Eff: 55.03 lm/W			
MODEL	SAMSUNG-2700K	I _{max} (cd)	143.8	S/MH(C0/180)	1.22
NOMINAL POWER(W)	7	LOR(%)	100.0	S/MH(C90/270)	1.17
RATED VOLTAGE(V)	48	TOTAL FLUX(lm)	376.40	η UP,DN(C0-180)	0.0,49.9
NOMINAL FLUX(lm)	376.398	CIE CLASS	DIRECT	η UP,DN(C180-360)	0.0,50.1
LAMPS INSIDE	1	η up(%)	0.0	CIBSE SHR NOM	1.25
TEST VOLTAGE(V)	48	η down(%)	100.0	CIBSE SHR MAX	1.35

LUMINOUS INTENSITY DISTRIBUTION DIAGRAM



C0 PLANE ISOLUX DIAGRAM (UNIT:lx)



C Range: 0 - 360DEG
 C Interval: 15.0DEG
 Test Speed: HIGH
 Temperature:25.3DEG
 Operators:Jason
 Test Date:2020-05-06

γ Range: 0 - 90DEG
 γ Interval: 0.5DEG
 Test System:EVERFINE GO-2000B_V1 SYSTEM V2.0.362
 Humidity:58%
 Test Distance:5.850m [K=1.0000]
 Remarks:

ZONAL FLUX DIAGRAM

ZONAL FLUX DIAGRAM:

γ	C0	C45	C90	C135	C180	C225	C270	C315	γ	Φ zone	Φ total	%lum, lamp
10	140.1	139.7	139.4	140.3	141.0	140.0	139.3	139.6	0- 10	13.54	13.54	3.6,3.6
20	130.4	128.6	128.7	129.7	132.0	129.9	127.9	129.0	10- 20	38.18	51.72	13.7,13.7
30	115.6	113.5	113.1	115.1	117.6	115.0	112.2	113.7	20- 30	56.37	108.1	28.7,28.7
40	97.38	95.11	94.50	97.17	100.2	96.89	93.65	95.32	30- 40	66.04	174.1	46.3,46.3
50	77.00	75.05	74.49	77.46	80.57	77.12	73.79	75.16	40- 50	66.64	240.8	64,64
60	55.00	54.06	53.69	56.78	59.57	56.23	53.47	53.82	50- 60	58.83	299.6	79.6,79.6
70	32.71	32.84	33.28	35.74	37.80	35.44	33.19	32.62	60- 70	44.26	343.9	91.4,91.4
80	11.76	13.07	14.13	15.77	16.57	15.66	14.15	12.84	70- 80	25.28	369.1	98.1,98.1
90	0.2559	0.6253	1.143	1.572	1.376	1.552	0.9838	0.5423	80- 90	7.256	376.4	100,100
100									90-100			
110									100-110			
120									110-120			
130									120-130			
140									130-140			
150									140-150			
160									150-160			
170									160-170			
180									170-180			
DEG	LUMINOUS INTENSITY:cd									UNIT:lm		

Conical surface Flux(90deg): 207.92 lm

%lum = 55.2%

%lamp = 55.2%

Conical surface Flux(120deg): 299.6 lm

%lum = 79.6%

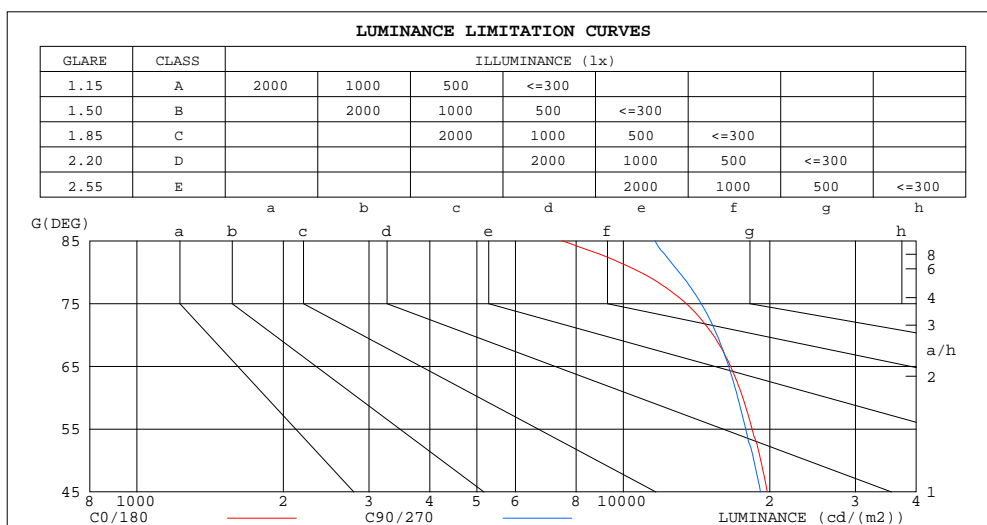
%lamp = 79.6%

C Range: 0 - 360DEG
C Interval: 15.0DEG
Test Speed: HIGH
Temperature:25.3DEG
Operators:Jason
Test Date:2020-05-06

γ Range: 0 - 90DEG
γ Interval: 0.5DEG
Test System:EVERFINE GO-2000B_V1 SYSTEM V2.0.362
Humidity:58%
Test Distance:5.850m [K=1.0000]
Remarks:

LUMINANCE LIMITATION CURVES

Test:U:48.00V I:0.1425A P:6.840W PF:1.000 Freq:0Hz Lamp Flux:376.398x1 lm		
NAME: ML26-SG280-7W-927	TYPE:Low Voltage Track System Module	
SPEC.:2700K	DIM.: L284mm*W22mm*H43mm	
MFR.: NEKO LIGHTING AG		



LUMINANCE cd/(m2)		
G(DEG)	C0/180	C90/270
85	7491	11615
80	10835	13022
75	13469	14449
70	15299	15578
65	16616	16462
60	17599	17187
55	18392	17843
50	19165	18549
45	19770	19150

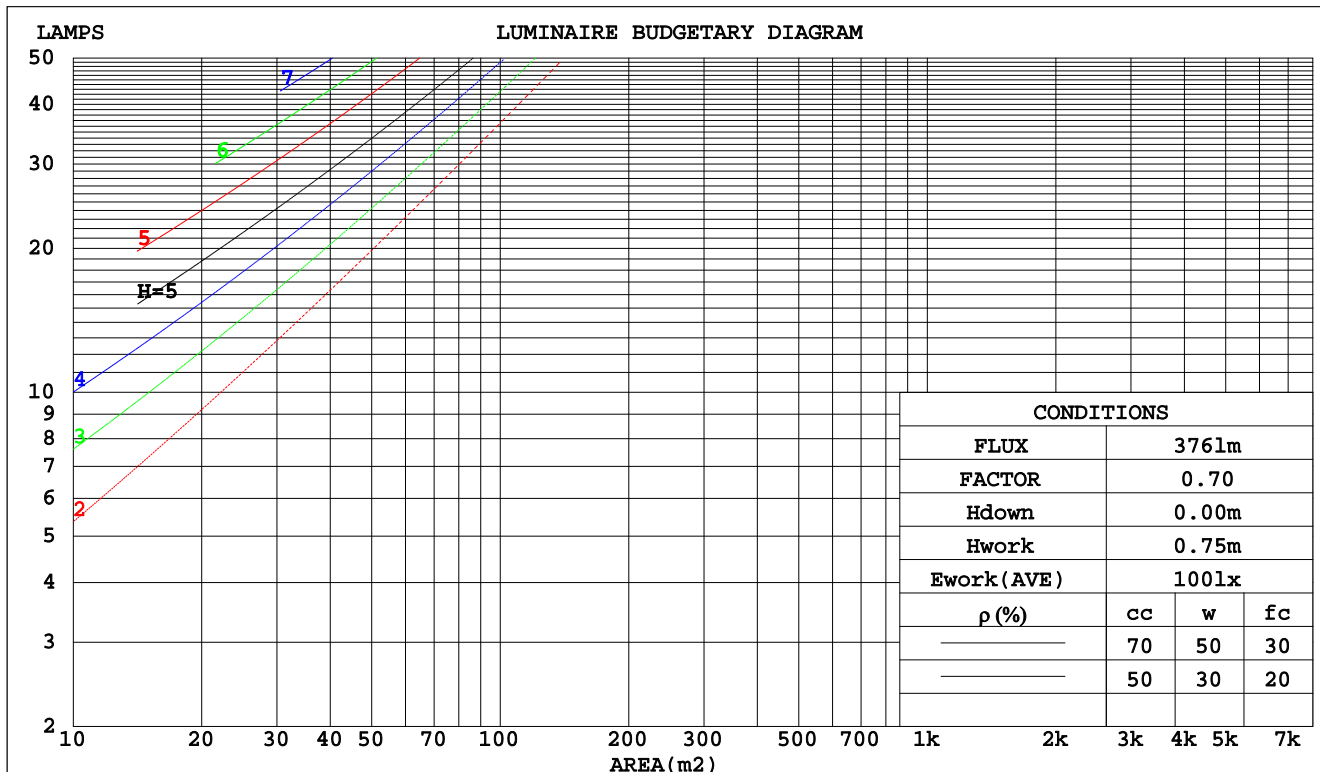
C Range: 0 - 360DEG
C Interval: 15.0DEG
Test Speed: HIGH
Temperature:25.3DEG
Operators:Jason
Test Date:2020-05-06

γ Range: 0 - 90DEG
γ Interval: 0.5DEG
Test System:EVERFINE GO-2000B_V1 SYSTEM V2.0.362
Humidity:58%
Test Distance:5.850m [K=1.0000]
Remarks:

CU AND LUMINAIRE BUDGETARY ESTIMATE DIAGRAM

Test:U:48.00V I:0.1425A P:6.840W PF:1.000 Freq:0Hz Lamp Flux:376.398x1 lm		
NAME: ML26-SG280-7W-927	TYPE:Low Voltage Track System Module	
SPEC.:2700K	DIM.: L284mm*W22mm*H43mm	
MFR.: NEKO LIGHTING AG		

pcc	80%			70%			50%			30%			10%			0
pw	50%	30%	10%	50%	30%	10%	50%	30%	10%	50%	30%	10%	50%	30%	10%	0
pfc	20%			20%			20%			20%			20%			0
RCR	Coefficients of Utilization(CU)															
0.0	1.19	1.19	1.19	1.16	1.16	1.16	1.11	1.11	1.11	1.06	1.06	1.06	1.02	1.02	1.02	1.00
1.0	1.04	.00	.96	1.02	.98	.94	.98	.94	.91	.94	.91	.89	.90	.88	.86	.84
2.0	.91	.84	.78	.89	.83	.77	.85	.80	.76	.82	.78	.74	.79	.76	.72	.70
3.0	.80	.72	.65	.78	.71	.65	.75	.69	.64	.73	.67	.63	.70	.65	.61	.59
4.0	.71	.62	.56	.70	.61	.55	.67	.60	.54	.65	.59	.54	.63	.57	.53	.51
5.0	.63	.55	.48	.62	.54	.48	.60	.53	.47	.58	.52	.47	.56	.51	.46	.44
6.0	.57	.48	.42	.56	.48	.42	.54	.47	.41	.53	.46	.41	.51	.45	.41	.39
7.0	.52	.43	.37	.51	.43	.37	.50	.42	.37	.48	.41	.36	.47	.41	.36	.34
8.0	.47	.39	.33	.47	.39	.33	.45	.38	.33	.44	.38	.33	.43	.37	.32	.31
9.0	.44	.35	.30	.43	.35	.30	.42	.35	.30	.41	.34	.30	.40	.34	.29	.28
10.0	.40	.32	.27	.40	.32	.27	.39	.32	.27	.38	.31	.27	.37	.31	.27	.25



C Range: 0 - 360DEG
C Interval: 15.0DEG
Test Speed: HIGH
Temperature: 25.3DEG
Operators: Jason
Test Date: 2020-05-06

γ Range: 0 - 90DEG
γ Interval: 0.5DEG
Test System: EVERFINE GO-2000B_V1 SYSTEM V2.0.362
Humidity: 58%
Test Distance: 5.850m [K=1.0000]
Remarks:

WEC AND CCEC

Test:U:48.00V I:0.1425A P:6.840W PF:1.000 Freq:0Hz Lamp Flux:376.398x1 lm		
NAME: ML26-SG280-7W-927	TYPE:Low Voltage Track System Module	
SPEC.:2700K	DIM.: L284mm*W22mm*H43mm	
MFR.: NEKO LIGHTING AG		

pcc	80%			70%			50%			30%			10%			0	
pw	50%	30%	10%	50%	30%	10%	50%	30%	10%	50%	30%	10%	50%	30%	10%	0	
pfc	20%			20%			20%			20%			20%			0	
RCR	RCR:Room Cavity Ratio						Wall Exitance Coefficients(WEC)										
0.0																	
1.0	.306	.174	.055	.299	.170	.054	.285	.164	.052	.273	.158	.051	.262	.152	.049		
2.0	.288	.158	.048	.281	.155	.048	.270	.150	.047	.259	.145	.045	.249	.141	.044		
3.0	.266	.142	.042	.261	.140	.042	.250	.136	.041	.241	.132	.040	.232	.128	.040		
4.0	.246	.128	.038	.241	.126	.037	.232	.123	.037	.223	.120	.036	.216	.117	.036		
5.0	.227	.116	.034	.223	.115	.033	.215	.112	.033	.208	.110	.033	.200	.107	.032		
6.0	.211	.106	.030	.207	.105	.030	.200	.103	.030	.193	.100	.030	.187	.098	.029		
7.0	.197	.097	.028	.193	.096	.027	.187	.094	.027	.181	.093	.027	.175	.091	.027		
8.0	.184	.090	.025	.181	.089	.025	.175	.087	.025	.170	.086	.025	.164	.084	.025		
9.0	.172	.083	.023	.170	.083	.023	.164	.081	.023	.160	.080	.023	.155	.079	.023		
10.0	.162	.078	.022	.160	.077	.022	.155	.076	.021	.151	.075	.021	.146	.074	.021		

pcc	80%			70%			50%			30%			10%			0	
pw	50%	30%	10%	50%	30%	10%	50%	30%	10%	50%	30%	10%	50%	30%	10%	0	
pfc	20%			20%			20%			20%			20%			0	
RCR	RCR:Room Cavity Ratio						Ceiling Cavity Exitance Coefficients(CCEC)										
0.0	.190	.190	.190	.163	.163	.163	.111	.111	.111	.064	.064	.064	.020	.020	.020		
1.0	.180	.156	.135	.154	.134	.116	.105	.092	.080	.061	.053	.047	.019	.017	.015		
2.0	.172	.132	.099	.147	.114	.085	.101	.079	.059	.058	.046	.035	.019	.015	.011		
3.0	.164	.114	.075	.140	.099	.065	.096	.068	.046	.056	.040	.027	.018	.013	.009		
4.0	.156	.101	.059	.134	.087	.051	.092	.061	.036	.053	.036	.021	.017	.012	.007		
5.0	.149	.090	.048	.128	.078	.041	.088	.055	.029	.051	.032	.017	.016	.010	.006		
6.0	.141	.082	.040	.122	.071	.034	.084	.050	.024	.049	.029	.014	.016	.010	.005		
7.0	.135	.075	.034	.116	.065	.029	.080	.046	.021	.046	.027	.012	.015	.009	.004		
8.0	.128	.069	.029	.110	.060	.025	.076	.042	.018	.044	.025	.011	.014	.008	.004		
9.0	.122	.064	.025	.105	.056	.022	.073	.039	.016	.042	.023	.009	.014	.008	.003		
10.0	.116	.060	.023	.100	.052	.020	.070	.037	.014	.041	.022	.008	.013	.007	.003		

C Range: 0 - 360DEG
C Interval: 15.0DEG
Test Speed: HIGH
Temperature:25.3DEG
Operators:Jason
Test Date:2020-05-06

γ Range: 0 - 90DEG
γ Interval: 0.5DEG
Test System:EVERFINE GO-2000B_V1 SYSTEM V2.0.362
Humidity:58%
Test Distance:5.850m [K=1.0000]
Remarks:

UGR(Unified Glare Rating) Table

Test:U:48.00V I:0.1425A P:6.840W PF:1.000 Freq:0Hz Lamp Flux:376.398x1 lm										
NAME: ML26-SG280-7W-927					TYPE:Low Voltage Track System Module					
SPEC.:2700K					DIM.: L284mm*W22mm*H43mm					
MFR.: NEKO LIGHTING AG										
ceiling/cavity	0.7	0.7	0.5	0.5	0.3	0.7	0.7	0.5	0.5	0.3
walls	0.5	0.3	0.5	0.3	0.3	0.5	0.3	0.5	0.3	0.3
working plane	0.2	0.2	0.2	0.2	0.2	0.2	0.2	0.2	0.2	0.2
Room dimensions	Viewed crosswise					Viewed endwise				
x = 2H y = 2H	26.2	27.7	26.5	27.9	28.1	26.1	27.6	26.4	27.8	28.0
3H	27.6	29.0	27.9	29.2	29.5	27.6	28.9	27.9	29.2	29.4
4H	28.1	29.5	28.5	29.7	30.0	28.1	29.5	28.5	29.7	30.0
6H	28.5	29.7	28.8	30.0	30.3	28.6	29.8	28.9	30.1	30.4
8H	28.5	29.7	28.9	30.0	30.3	28.7	29.9	29.0	30.2	30.5
12H	28.5	29.7	28.9	30.0	30.3	28.8	29.9	29.1	30.2	30.5
4H 2H	26.8	28.1	27.1	28.4	28.6	26.7	28.0	27.0	28.3	28.5
3H	28.4	29.5	28.7	29.8	30.1	28.3	29.5	28.7	29.8	30.1
4H	29.0	30.1	29.4	30.4	30.7	29.0	30.1	29.4	30.4	30.7
6H	29.4	30.4	29.8	30.7	31.1	29.6	30.5	30.0	30.9	31.2
8H	29.5	30.4	30.0	30.8	31.2	29.8	30.6	30.2	31.0	31.4
12H	29.6	30.4	30.0	30.8	31.2	29.9	30.7	30.3	31.1	31.5
8H 4H	29.2	30.1	29.7	30.5	30.9	29.3	30.1	29.7	30.5	30.9
6H	29.8	30.5	30.2	30.9	31.4	29.9	30.7	30.4	31.1	31.5
8H	30.0	30.6	30.4	31.0	31.5	30.2	30.9	30.7	31.3	31.7
12H	30.1	30.6	30.6	31.1	31.6	30.4	31.0	30.9	31.4	31.9
12H 4H	29.2	30.0	29.7	30.4	30.8	29.3	30.1	29.7	30.5	30.9
6H	29.8	30.5	30.3	30.9	31.4	30.0	30.6	30.4	31.1	31.5
8H	30.1	30.6	30.5	31.1	31.5	30.3	30.8	30.8	31.3	31.8
Variations with the observer position at spacings:										
S = 1.0H	+ 0.2 / - 0.2					+ 0.2 / - 0.2				
1.5H	+ 0.2 / - 0.3					+ 0.2 / - 0.3				
2.0H	+ 0.2 / - 0.3					+ 0.2 / - 0.2				

CIE Pub.117, 376.4 lm Total Lamp Luminous Flux Correct ($8\log(F/F_0) = -3.4$)

C Range: 0 - 360DEG
C Interval: 15.0DEG
Test Speed: HIGH
Temperature:25.3DEG
Operators:Jason
Test Date:2020-05-06

γ Range: 0 - 90DEG
 γ Interval: 0.5DEG
Test System:EVERFINE GO-2000B_V1 SYSTEM V2.0.362
Humidity:58%
Test Distance:5.850m [K=1.0000]
Remarks:

UTILIZATION FACTORS TABLE

Test:U:48.00V I:0.1425A P:6.840W PF:1.000 Freq:0Hz Lamp Flux:376.398x1 lm		
NAME: ML26-SG280-7W-927	TYPE:Low Voltage Track System Module	
SPEC.:2700K	DIM.: L284mm*W22mm*H43mm	
MFR.: NEKO LIGHTING AG		

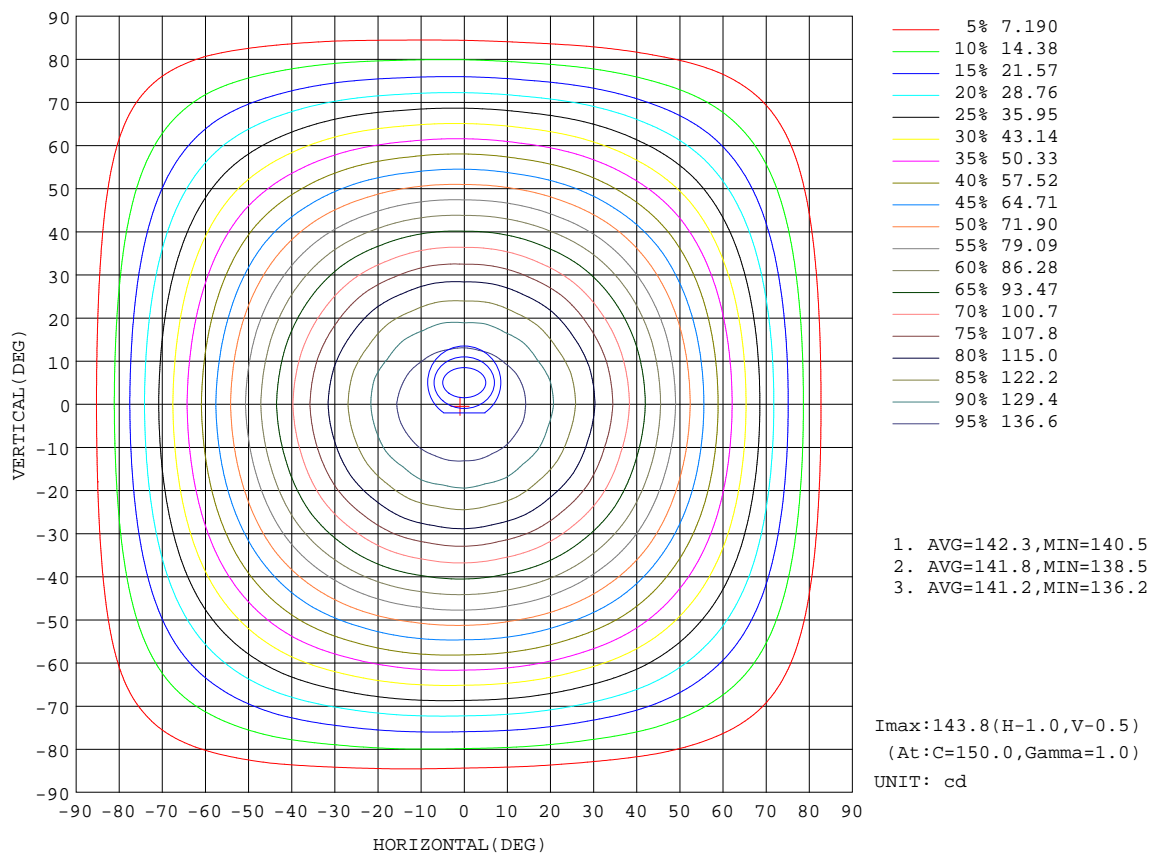
REFLECTANCE										
Ceiling	0.8	0.8	0.8	0.7	0.7	0.7	0.5	0.5	0.5	0
Walls	0.7	0.5	0.3	0.7	0.5	0.3	0.7	0.5	0.3	0
Working plane	0.2	0.2	0.2	0.2	0.2	0.2	0.2	0.2	0.2	0
ROOM INDEX	UTILIZATION FACTORS(PERCENT) $k(RI) \times RCR = 5$									
k = 0.60	58	47	40	58	47	40	57	46	40	34
0.80	68	57	50	67	57	50	66	56	49	42
1.00	77	66	59	76	65	58	73	67	58	51
1.25	84	73	66	82	73	66	80	71	65	58
1.50	89	79	72	87	78	72	84	76	71	63
2.00	95	87	81	94	86	80	90	84	78	71
2.50	99	92	86	97	90	85	93	88	83	75
3.00	103	96	90	100	94	89	96	91	87	79
4.00	106	101	96	104	99	95	100	96	92	83
5.00	109	104	100	106	102	99	102	99	95	86
ROOM INDEX	UF(total)									Direct
According to DIN EN 13032-2 2004			Suspended					SHRNOM = 1.25		

C Range: 0 - 360DEG
C Interval: 15.0DEG
Test Speed: HIGH
Temperature:25.3DEG
Operators:Jason
Test Date:2020-05-06

γ Range: 0 - 90DEG
 γ Interval: 0.5DEG
Test System:EVERFINE GO-2000B_V1 SYSTEM V2.0.362
Humidity:58%
Test Distance:5.850m [K=1.0000]
Remarks:

ISOCANDELA DIAGRAM

Test:U:48.00V I:0.1425A P:6.840W PF:1.000 Freq:0Hz Lamp Flux:376.398x1 lm		
NAME: ML26-SG280-7W-927	TYPE:Low Voltage Track System Module	
SPEC.:2700K	DIM.: L284mm*W22mm*H43mm	
MFR.: NEKO LIGHTING AG		



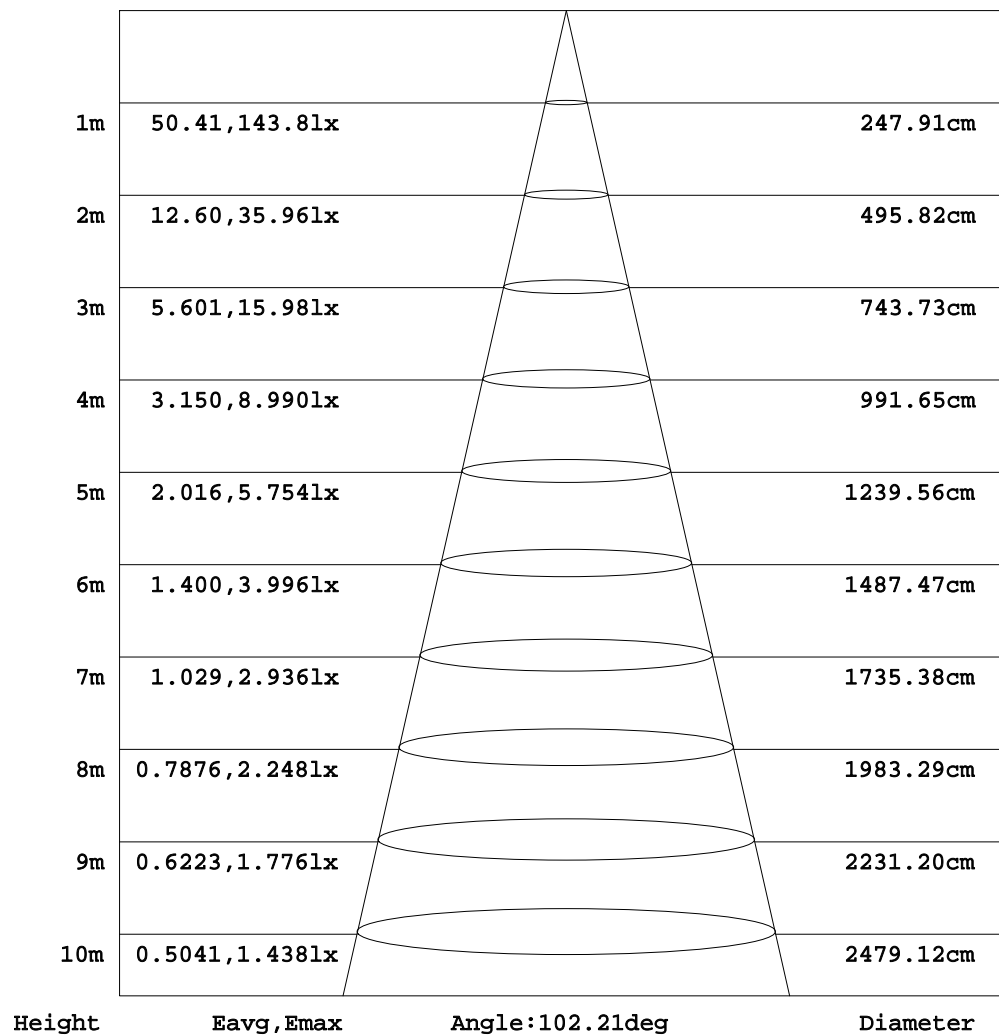
C Range: 0 - 360DEG
C Interval: 15.0DEG
Test Speed: HIGH
Temperature:25.3DEG
Operators:Jason
Test Date:2020-05-06

γ Range: 0 - 90DEG
γ Interval: 0.5DEG
Test System:EVERFINE GO-2000B_V1 SYSTEM V2.0.362
Humidity:58%
Test Distance:5.850m [K=1.0000]
Remarks:

AAI Figure

Test:U:48.00V I:0.1425A P:6.840W PF:1.000 Freq:0Hz Lamp Flux:376.398x1 lm		
NAME: ML26-SG280-7W-927	TYPE:Low Voltage Track System Module	
SPEC.:2700K	DIM.: L284mm*W22mm*H43mm	
MFR.: NEKO LIGHTING AG		

Flux out:250.3 lm



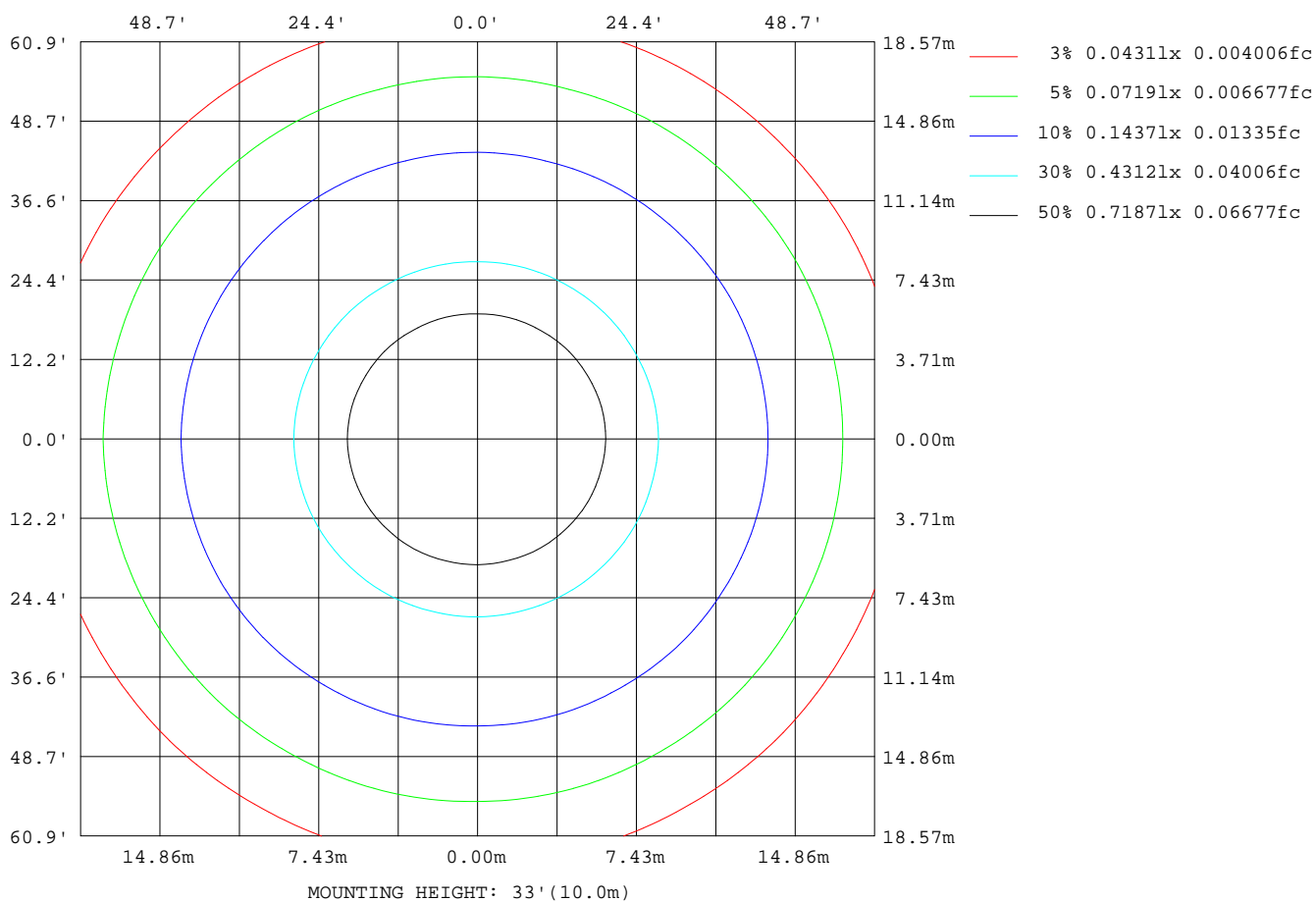
Note:The Curves indicate the illuminated area and the average illumination when the luminaire is at different distance.

C Range: 0 - 360DEG
C Interval: 15.0DEG
Test Speed: HIGH
Temperature:25.3DEG
Operators:Jason
Test Date:2020-05-06

γ Range: 0 - 90DEG
γ Interval: 0.5DEG
Test System:EVERFINE GO-2000B_V1 SYSTEM V2.0.362
Humidity:58%
Test Distance:5.850m [K=1.0000]
Remarks:

ISOLUX DIAGRAM

Test:U:48.00V I:0.1425A P:6.840W PF:1.000 Freq:0Hz Lamp Flux:376.398x1 lm		
NAME: ML26-SG280-7W-927	TYPE:Low Voltage Track System Module	
SPEC.:2700K	DIM.: L284mm*W22mm*H43mm	
MFR.: NEKO LIGHTING AG		



C Range: 0 - 360DEG
C Interval: 15.0DEG
Test Speed: HIGH
Temperature:25.3DEG
Operators:Jason
Test Date:2020-05-06

γ Range: 0 - 90DEG
γ Interval: 0.5DEG
Test System:EVERFINE GO-2000B_V1 SYSTEM V2.0.362
Humidity:58%
Test Distance:5.850m [K=1.0000]
Remarks:

LED Avg.L Report

Test:U:48.00V I:0.1425A P:6.840W PF:1.000 Freq:0Hz Lamp Flux:376.398x1 lm		
NAME: ML26-SG280-7W-927	TYPE:Low Voltage Track System Module	
SPEC.:2700K	DIM.: L284mm*W22mm*H43mm	
MFR.: NEKO LIGHTING AG		

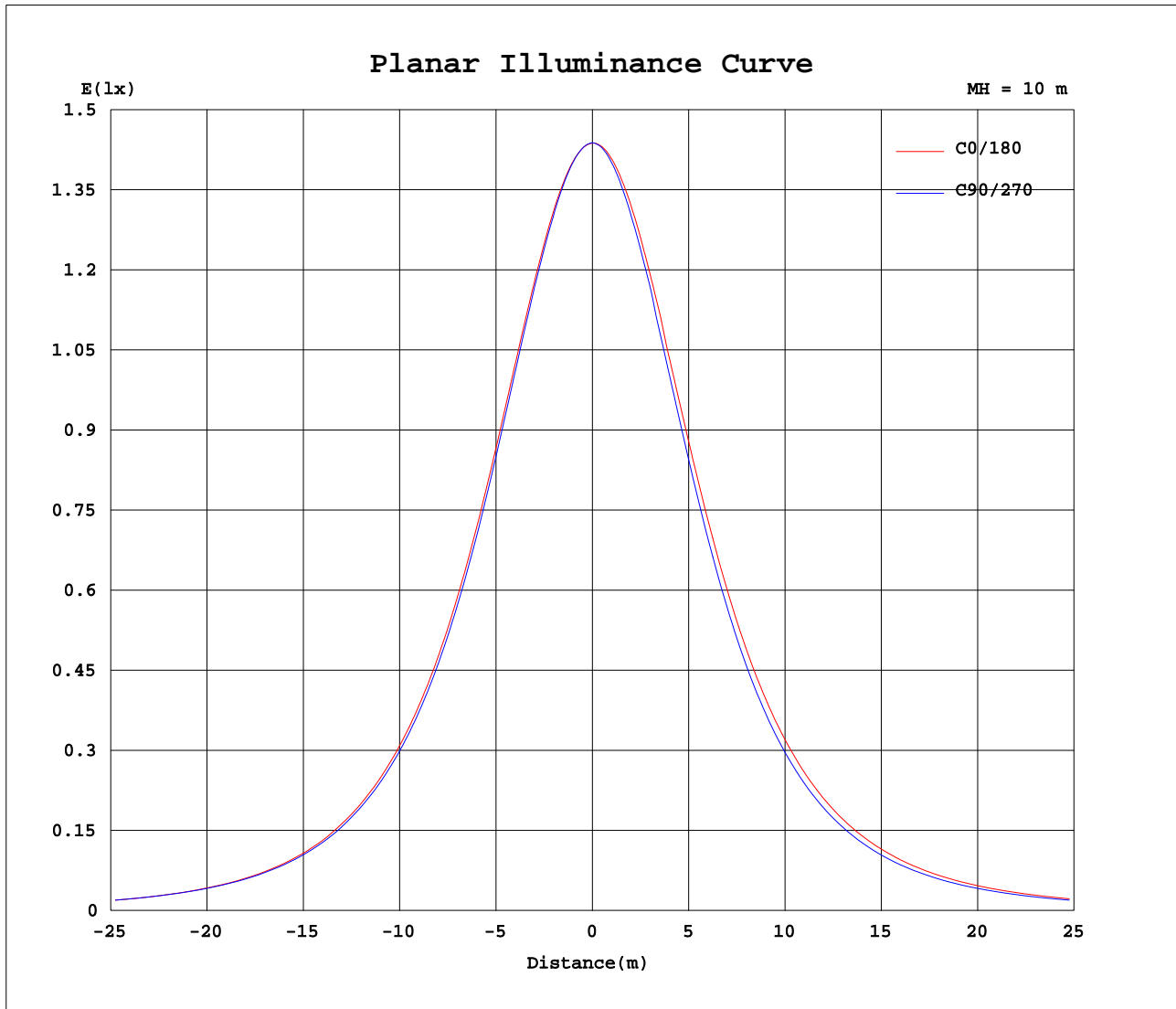
AvgL	cd/m2
L_0~180(65)av	17540
L_0~180(75)av	15061
L_0~180(85)av	10722
L_90~270(65)av	16428
L_90~270(75)av	14441
L_90~270(85)av	11609
L_45(65)av	16922
L_45(75)av	14782
L_45(85)av	11591

Standard: GB/T 29293-2012

C Range: 0 - 360DEG
C Interval: 15.0DEG
Test Speed: HIGH
Temperature:25.3DEG
Operators:Jason
Test Date:2020-05-06

γ Range: 0 - 90DEG
γ Interval: 0.5DEG
Test System:EVERFINE GO-2000B_V1 SYSTEM V2.0.362
Humidity:58%
Test Distance:5.850m [K=1.0000]
Remarks:

Planar Illuminance Curve



C Range: 0 - 360DEG
C Interval: 15.0DEG
Test Speed: HIGH
Temperature: 25.3DEG
Operators: Jason
Test Date: 2020-05-06

γ Range: 0 - 90DEG
 γ Interval: 0.5DEG
Test System: EVERFINE GO-2000B_V1 SYSTEM V2.0.362
Humidity: 58%
Test Distance: 5.850m [K=1.0000]
Remarks:

```

γ Range: 0 - 90DEG
γ Interval: 0.5DEG
Test System:EVERFINE GO-2000B_V1 SYSTEM V2.0.362
Humidity:58%
Test Distance:5.850m [K=1.0000]
Remarks:

```

```

γ Range: 0 - 90DEG
γ Interval: 0.5DEG
Test System:EVERFINE GO-2000B_V1 SYSTEM V2.0.362
Humidity:58%
Test Distance:5.850m [K=1.0000]
Remarks:

```